

* Safety in * Communal Areas

Your safety is our priority at MSV Housing. Please read this information to understand your role in helping us maintain safe, accessible communal areas

What are Communal Areas?

Communal Areas are **all internal and external areas that are shared**. This includes gardens, parking areas, bin stores, corridors, lobbies, hallways, stairwells, walkways, under stair areas, riser and service cupboards, basements, and lofts

Fire Safety: A Top Priority

- **Evacuation:** In case of a fire, **get out, stay out, and call 999**. Follow your escape plan or stay in your flat if it's safe
- **Smoke detectors:** Don't cover smoke detectors in your home or communal areas
- **Fire doors:** Keep fire doors closed and follow fire door guidance displayed in communal areas
- **Keep communal areas clear:** Don't store personal items in hallways, stairwells, or other shared spaces
- **No glass frames to be hung in escape routes:** Glass can shatter during a fire
- **Safe electrical storage:** Don't store flammable items near electrical outlets or cupboards
- **Proper waste disposal:** Dispose of rubbish correctly (including bulky items)
- **No smoking:** Do not smoke in communal areas

Doormats and Preventing Slips and Falls

- Use **non-slip doormats** that fit in front of your door
- **Don't use oversized mats** or those with curling edges
- **Don't place mats at the top of stairs**
- **Please do not use rugs, runners or carpet tiles**
- **Prevent slips and falls by promptly cleaning up spills**

Mobility Scooters and Electric Bikes/ Appliances



- **Don't use extension cords, or use/ charge electrical appliances in communal areas**
- **Store and charge mobility scooters and electric bikes in designated areas**
- **For alternative storage arrangements, please contact your Neighbourhood Officer**

Lifts

- **Use lifts responsibly and do not wedge doors open**



* Safety in * Communal Areas

Chimneys and Barbecues

- Use chimneys and barbecues **responsibly**
- Follow **safety guidelines** to prevent fires and nuisance - search for Health and Safety on our website at **msvhousing.co.uk** to find out more

Communal Gardens

- Help maintain **tidy gardens**
- **Do not burn waste**, as it can cause nuisance and harm
- Use **green waste bins** for garden waste



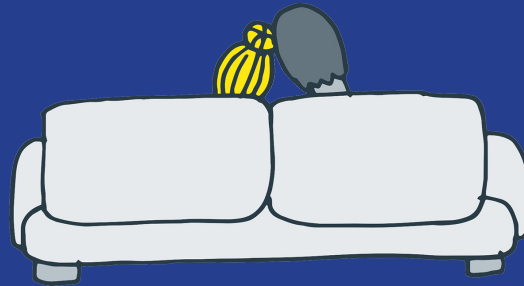
Find out more:

- Contact your Neighbourhood Officer - search for **Neighbourhood Officer** on our website at **msvhousing.co.uk** to find details
- Email: **enquiry@msvhousing.co.uk**
- Call: **0161 226 4211**
- Visit: **msvhousing.co.uk**



Your Flat: Your Responsibility

- Please ensure your **smoke detectors are working in your home**, and you maintain your home according to your tenancy agreement.
- Please make sure you have a **working CO2 detector** if it is required



Mosscares St Vincents Housing Group Head Office, 7th Floor,
Trafford House, Chester Road, Stretford, Manchester M32 0RS

If you would like this information in another language or format, then please contact us

Si vous voulez ces informations dans une autre langue ou format, prière de nous contacter

ਜੇ ਤੁਹਾਨੂੰ ਇਹ ਜਾਣਕਾਰੀ ਖੋਜਣ ਦੀ ਜਾਂ ਕਿਸੇ ਹੋਰ ਤਰੀਕੇ ਵਿਚ ਚਾਹੀਦੀ ਹੈ ਤਾਂ ਕਿਰਪਾ ਕਰਕੇ ਸਾਡੇ ਨਾਲ ਸੰਪਰਕ ਕਰੋ।

إذا كنت ترغب في الحصول على هذه المعلومات بلغة أو صيغة أخرى، فيرجى الاتصال بنا.



telephone
0161 226 4211



email
enquiry@msvhousing.co.uk



visit
msvhousing.co.uk

Haddii aad macluumaadkan ubaahan tahay luqad kale ama hab kale, fadlan nala soo xiriir

Jeśli wymagasz tej informacji w innym języku lub formacie to skontaktuj się z nami

اگر این اطلاعات را به یک زبان دیگر و یا به یک قالب متفاوت می خواهید لطفاً با ما تماس بگیرید.

ਜੇ ਤੁਹਾਨੂੰ ਇਹ ਜਾਣਕਾਰੀ ਖੋਜਣ ਦੀ ਜਾਂ ਕਿਸੇ ਹੋਰ ਤਰੀਕੇ ਵਿਚ ਚਾਹੀਦੀ ਹੈ ਤਾਂ ਕਿਰਪਾ ਕਰਕੇ ਸਾਡੇ ਨਾਲ ਸੰਪਰਕ ਕਰੋ।

اگر آپ کو یہ معلومات کسی دوسری زبان یا شکل میں چاہیے تو براہ کرم ہم سے رابطہ کریں۔